

MAGNA-ROLLER STRESS PAIN MANAGEMENT SYSTEM

- RELLEVE MUSCLE PAIN
- RELIEVE MUSCLE STRESS
- IMPROVE BLOOD CIRCULATION

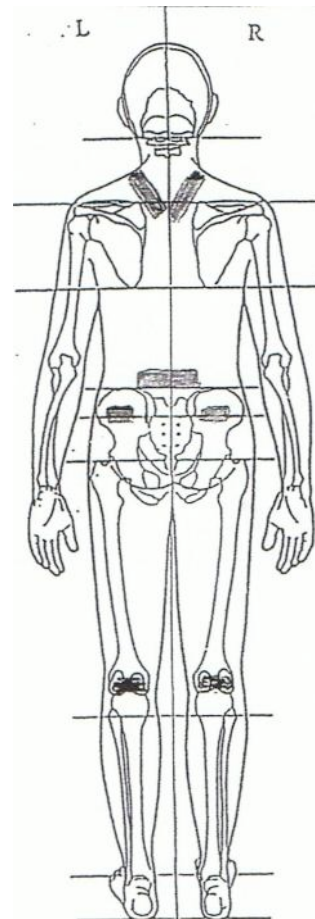
- DO NOT USE IF YOU HAVE AN ELECTRICAL IMPLANT?
- DO NOT USE ON CHILDREN.
- DO NOT USE ON PREGNANT WOMEN.
- LIMIT USE TO 30 MINUTES PER SIX HOUR INTERVALS.
- CONSULT YOUR PHYSICIAN IF YOU HAVE ANY CONCERNS IN THE USE OF THIS ITEM.
- KEEP ONE FOOT AWAY FROM ANY CREDIT CARDS
CELL PHONES,COMPUTERS,AUDIO&VIDEO TAPES
OR MAGNETIC SENSITIVE ELECTRONIC EQUIPMENT

For any information about this product

A.D. Exersize Inc.

33336 Duff Rd, Walker La 70785 225-

665-7982



Magna Roller/Block Directions

- ❑ Roll Magna Blocks across any tight tissue for pain reduction and relaxation effect.
- ❑ Roll Magna Blocks along legs during seated stretch to enhance stretch effect.
- ❑ Place the Magna Roller in any of the positions depicted on the body chart for pain/stress issues.
- ❑ Twist off either end of the Magna Roller handle to remove the Magna Blocks.
- ❑ Place the Magna Blocks in any combination of the positions depicted on the body chart for pain/stress issues.
- ❑ Thread the wire through the Magna Blocks to boost the Pneuma Body Charger effect.